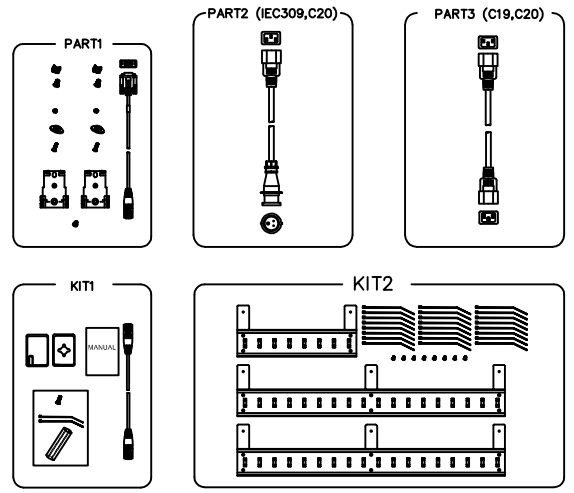
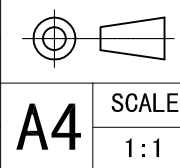


1. RACK MOUNTED ALUMINUM CHASSIS, BLACK MEDIUM TEXTURE  
1524 mm LENGTH  
55 mm WIDTH  
65 mm DEPTH (OUTLET SECTION)  
113 mm DEPTH (BREAKER SECTION)
2. INPUT: 200-240V 16A 3-PHAS, 50/60 Hz  
CABLE: 3m LENGTH
3. OUTPUT: 200-240V, 50/60 Hz  
10A AT 21 IEC C13 RECEPTACLES (A1~A7, B1~B7, C1~C7)  
16A AT 3 IEC C19 RECEPTACLES (A8, B8, C8)
4. BREAKERS: NONE
5. CURRENT METER :  
LOCAL & GUI DISPLAY  
ACCESSIBLE VIA ETHERNET (RJ45 PORT) INTERFACES:  
WEB (HTTP)  
SNMP  
SMTP (E-MAIL NOTIFICATION)  
ACCURACY: 1.5% FROM 0.4A TO 2A AND 1% FROM 2A TO 10A  
RESOLUTION:  
<10A : ±0.001A  
≥10A : ±0.01A  
RANGE: 0.4A~10A
6. TEMPERATURE AND HUMIDITY SENSORS (EMP001):  
TEMPERATURE: ONE FOR INTERNAL AND THE OTHER FOR EXTERNAL MEASUREMENT  
ACCESSIBLE VIA ETHERNET (RJ45 PORT)  
RANGE: 0℃ TO 65℃  
HUMIDITY: ONE FOR EXTERNAL MEASUREMENT  
ACCESSIBLE VIA ETHERNET (RJ45 PORT)  
RANGE: 20% TO 90%
7. OUTLET LED INDICATOR :  
ON: OUTLET IS POWERED  
OFF: OUTLET IS UNPOWERED  
BLINKING: CRITICAL ALARM
8. OPTIONAL KITS:  
KIT1: EMP001 (744-A1576-00P)  
KIT2: KBLT01(744-A1419-00P)
9. SPARE PARTS:  
PART1: SPK001(744-A1418-00P)  
PART2: SPK003(744-A1582-00P)  
PART3: SPK002(744-A1581-00P)
10. RoHS COMPLICANT PER DIRECTIVE 2011/65/EC  
WITH APPLICABLE EXEMPTIONS  
REACH COMPLIANCE
11. GW:6.54KG    NW:5.02KG



TITLE	EATON ePDU OUTLINE DRAWING	DRAW	
CATALOG NO.	eMAA14	DESIGN	
MANUF No.	9001-22074	CHECKED	
COATING	POWDER COATING	SAFETY	
UNITS	mm	APPROVED	
SHEET	1/1	<b>EATON</b> ELECTRICAL SECTOR	



Pao-An\_plant 1 E2028960(Yang, Bruce)\_2011-9-13 17:51:42