



SMALL  
COMPUTERS  
NETWORK



LOCAL AREA  
NETWORKS  
(LAN)



WORK-  
STATIONS



SERVERS



EPOS(Electronic  
Point of Sales)  
SYSTEM



**Eco Power  
Supplies**

# Dialog Plus

## 700-3000 VA

### single-phase

Dialog Plus 700-3000 VA



The DIALOG PLUS series includes the 700-1000-1500-2000-3000VA models and uses double conversion technology (VFI). The load is powered continuously by the inverter with an EMI filter, stabilised and regulated sinewave supply. The input and output EMI filters considerably increase the immunity of the load to mains disturbances and surges, even on bypass. The UPS can power the load for long periods (using battery extension packs) or provide sufficient runtime to allow shut-down of the protected systems using the PowerShield<sup>3</sup> software, supplied as standard, for Windows 95, 98, NT 4.0, Me, 2000, 2003, XP, Vista, Mac OS 9.x, X, Linux operating systems.

For outstanding power protection and communication DIALOG PLUS is the best solution for sensitive and "mission-critical" applications. DIALOG PLUS-ER models are supplied with a larger internal charger and with their matching external battery extension packs can achieve long back up times.

#### CHARACTERISTICS

- Reliable, filtered, stabilised and regulated sinewave output (double conversion technology VFI in conformance with IEC 62040-3 specifications) with filters for atmospheric disturbance suppression
- High level immunity to surges (up to 150%)
- Auto restart on mains return (programmable)
- Start-up without mains (Cold Start)

- Power factor correction with sinusoidal input to ensure a low impact on the mains supply (UPS input power factor, close to 1)
- Wide input voltage window (110-300Vac) to reduce battery usage
- Integrated protection for PC networks and telephone line/modem connections RJ45-RJ11
- Option to extend the back up time to several hours
- Software-programmable operating parameters
- Timer for scheduled shut-down and power up (software programmable)
- Highly reliable batteries with automatic and manual test feature
- Highly reliable system with full microprocessor control
- Breaker based input protection.

#### ADVANCED COMMUNICATION

- Advanced, multi-platform communication for all operating systems and network environments: PowerShield<sup>3</sup> monitoring and shut-down software included, for Windows 2008, Vista, 2003, XP; Mac OS X, Linux, Novell and most popular Unix operating systems.
- Free UPS tools configuration software
- RS232 serial port
- Slot-in SNMP network adapter card.

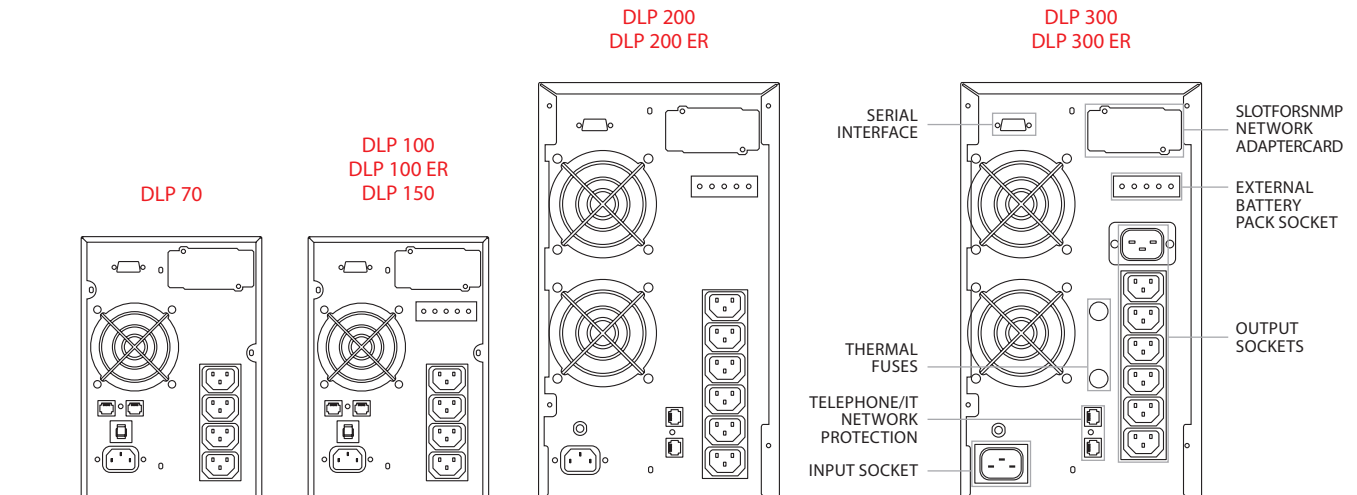
2 YEAR WARRANTY

MODELS	DLP 70	DLP 100	DLP 100 ER	DLP 150	DLP 200	DLP 200 ER	DLP 300	DLP 300 ER
POWER	700VA/490W	1000VA/700W		1500VA/1050W	2000VA/1400W		3000VA/2100W	
INPUT								
Rated voltage	220-230-240 Vac							
Minimum voltage range	110V up to 60% of load / 120V from 60% to 70% of load / 140V from 70% to 80% of load / 160V from 80% to 100% of load							
Maximum voltage	300 Vac							
Rated frequency	50/60 Hz auto sensing							
Power factor	> 0.97							
Input current	Sinewave							
BY PASS								
Voltage range	180 - 264 Vac							
Frequency range	Selected frequency $\pm$ 5Hz							
OUTPUT								
Rated voltage	Selectable 220, 230 or 240 Vac $\pm$ 1.5%							
Voltage distortion	< 2%							
Frequency	50 or 60 Hz auto sensing							
Waveform	Sinewave							
Crest factor	3: 1							
Overloads	110% 30'; 130% 30"; 150% 10"							
BATTERIES								
Type	VRLA AGM Maintenance-free lead-acid							
Recharge time	2-4 h		-	2-4 h	4 h		4 h	-

Dialog Plus 700-3000 VA

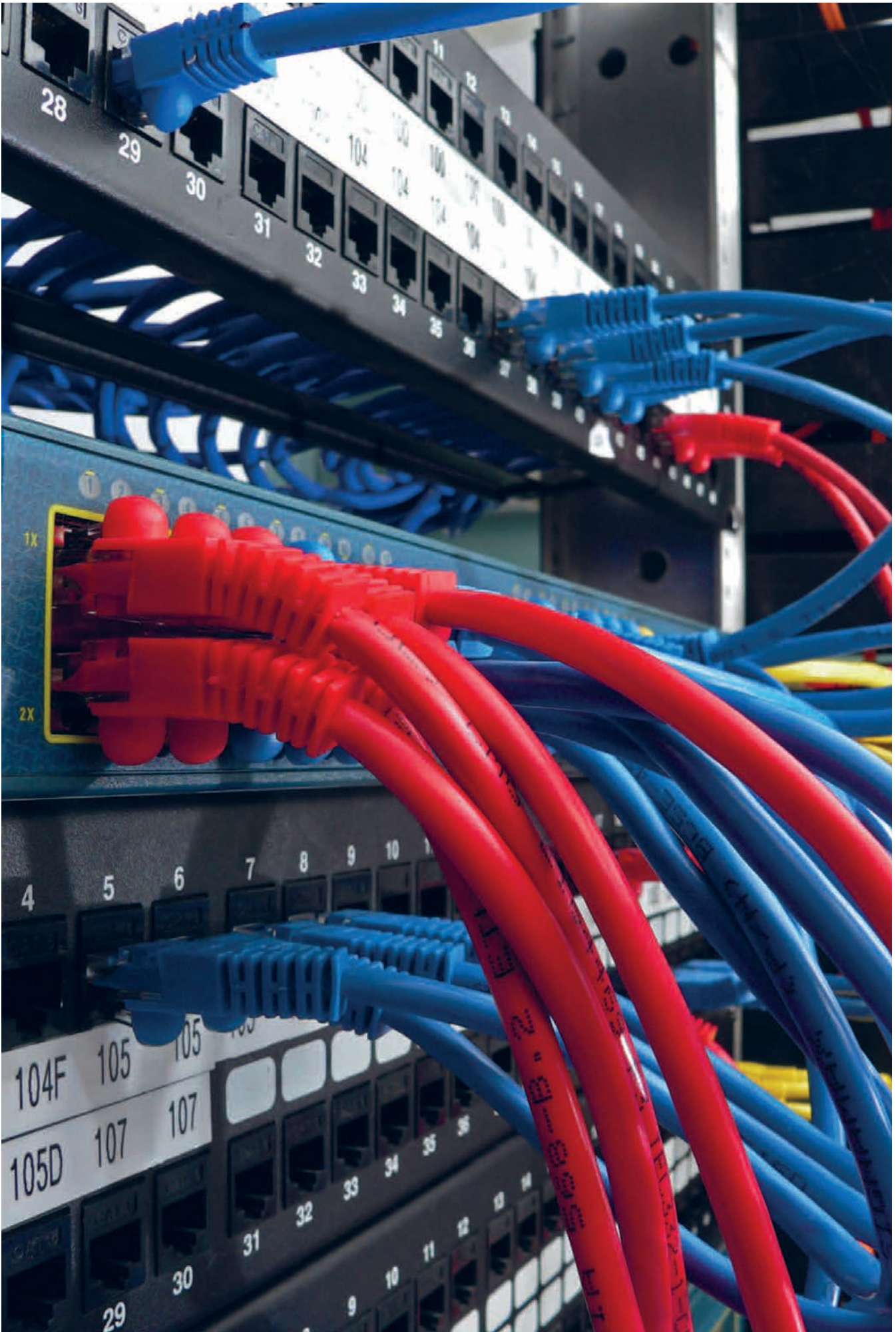


MODELS	DLP 70	DLP 100	DLP 100 ER	DLP 150	DLP 200	DLP 200 ER	DLP 300	DLP 300 ER
POWER	700VA/490W	1000VA/700W		1500VA/1050W	2000VA/1400W		3000VA/2100W	
ENVIRONMENTAL								
Weight (kg)	12	14	8	19	34	14	35	15
Dimensions (HxWxD) (mm)	231 x 158 x 400			231 x 158 x 500		340 x 192 x 460		
Protection	Overload - short-circuit - overvoltage - undervoltage - temperature - low battery							
Communication	RS232 + communication interface slot							
Compliance	EN 62040-1 EMC EN 62040-2 Directive 2006/95/EC - 2004/108 EC; EN 62040-3							
Operating temperature	0°C ÷ +40°C							
Relative humidity	< 95% non condensing							
Surge capability	3KA 8/20 µs							
Colour	Dark grey RAL 7016							
Noise	< 40 dBA at 1 m							
Extended runtime solutions	-				yes			
Isolationtransf.box(HxWxD)(mm)	231 x 158 x 434				340 x 158 x 460			



TECHNICAL DETAILS

BATTERY BOX MODELS	BB 36-07 BB 36-12	BB 48-07 BB 48-12	BB 36-24	BB 48-24	BB 96-07 BB 96-12	BB 96-38
DLP MODEL	DLP 100	DLP 150	DLP 100/ER	DLP 150	DLP200-300/ER	DLP 200-300/ER
Dimensions(mm) h x w x d						



Dialog Plus 700-3000 VA