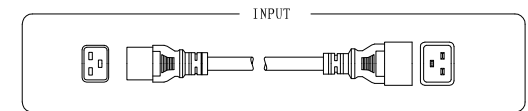
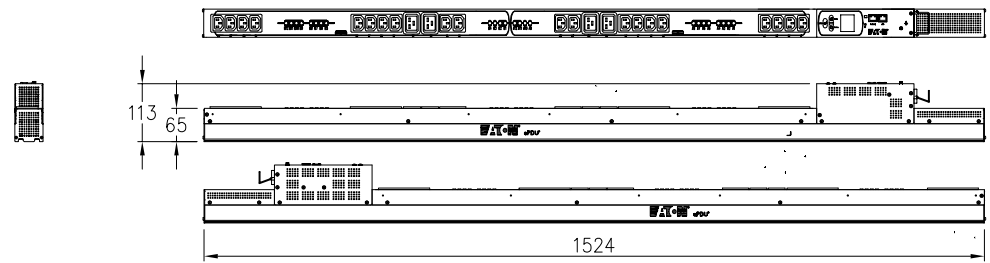


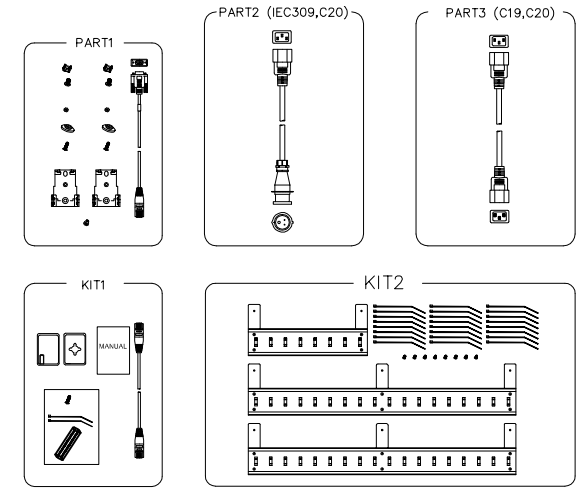
F
E
D
C
B
A

F
E
D
C
B
A



1. RACK MOUNTED ALUMINUM CHASSIS, BLACK MEDIUM TEXTURE
1524 mm LENGTH
55 mm WIDTH
65 mm DEPTH (OUTLET SECTION)
113 mm DEPTH (BREAKER SECTION)
2. INPUT: 200-240V 16A 1-PHASE, 50/60 Hz
CABLE: 3m LENGTH
3. OUTPUT: 200-240V, 50/60 Hz
10A AT 20 IEC C13 RECEPTACLES (A1~A8, A11~A12, B1~B2, B5~B12)
16A AT 4 IEC C19 RECEPTACLES (A9~A10, B3~B4)
4. BREAKERS: NONE
5. CURRENT METER :
LOCAL & GUI DISPLAY
ACCESSIBLE VIA ETHERNET (RJ45 PORT) INTERFACES:
WEB (HTTP)
SNMP
SMTP (E-MAIL NOTIFICATION)
ACCURACY: 1.5% FROM 0.4A TO 2A AND 1% FROM 2A TO 10A
RESOLUTION:
<10A : ±0.001A
≥10A : ±0.01A
RANGE: 0.4A~10A

6. TEMPERATURE AND HUMIDITY SENSORS (EMP001):
TEMPERATURE: ONE FOR INTERNAL AND THE OTHER FOR EXTERNAL MEASUREMENT
ACCESSIBLE VIA ETHERNET (RJ45 PORT)
RANGE: 0°C TO 65°C
HUMIDITY: ONE FOR EXTERNAL MEASUREMENT
ACCESSIBLE VIA ETHERNET (RJ45 PORT)
RANGE: 20% TO 90%
7. OUTLET LED INDICATOR :
ON: OUTLET IS POWERED
OFF: OUTLET IS UNPOWERED
BLINKING: CRITICAL ALARM
8. OPTIONAL KITS:
KIT1: EMP001 (744-A1576-00P)
KIT2: KBLT01(744-A1419-00P)
9. SPARE PARTS:
PART1: SPK001(744-A1418-00P)
PART2: SPK003(744-A1582-00P)
PART3: SPK002(744-A1581-00P)
10. RoHS COMPLICANT PER DIRECTIVE 2011/65/EC
WITH APPLICABLE EXEMPTIONS
REACH COMPLIANCE
11. GW: 6.54KG NW: 4.91KG



TITLE	EATON ePDU OUTLINE DRAWING		DRAW	
CATALOG NO.	eMAA12		DESIGN	
MANUF No.	9001-22065		CHECKED	
COATING	POWDER COATING		SAFETY	
UNITS	mm	A4	APPROVED	
SHEET	1/1		SCALE	1:1